

WasteTrack MOBILE

WasteTrack Mobile is an integrated technology platform for the Environmental Services sector.



www.3logix.com.au



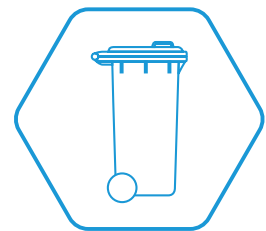
KEY BENEFITS:



**Bin Contamination
Inspections with
Photographic Evidence**



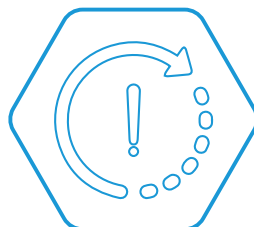
**Bin
Maintenance**



**Bin Deployments
with or without UHF RFID**



**Site
Audits**



**Service
Exceptions**

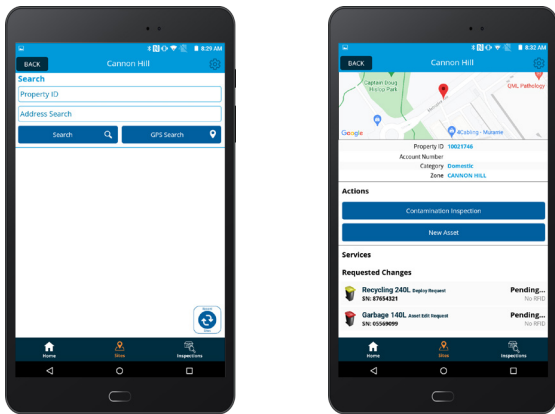


**GPS
Tracking**

WasteTrack Mobile utilises advanced technology and provides powerful function and reliable performance. Available on both Android and iOS platforms with and without RFID. WasteTrack Mobile seamlessly connects your mobile workforce with the 3Logix SaaS Solution WasteTrack.

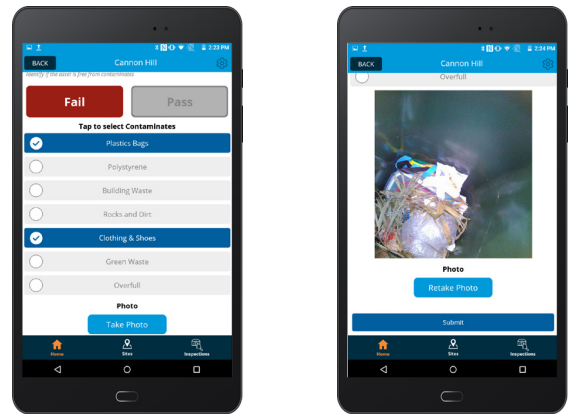
The WasteTrack Mobile app empowers your field-based staff with the ability to:

➤ **View Site Information**



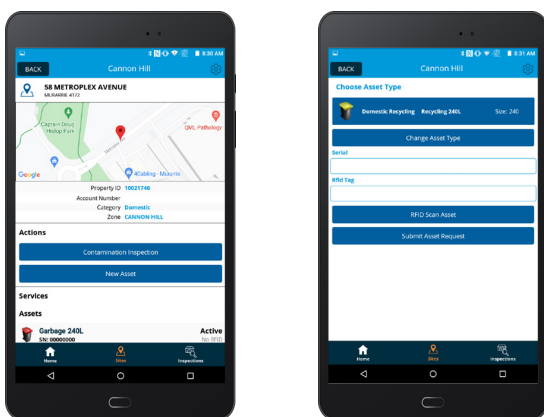
Through WasteTrack Mobile site search you can search for the closest property to your GPS location or manually enter a site address. Once a site is selected a list of services, collection runs, and allocated bin assets will be displayed.

➤ **Perform and report Contamination Inspections in real time.**



WasteTrack Mobile's Contamination Inspection provides the ability to select a specific bin at a property and record either a pass or failed bin inspection. Recording a failed result allows you to identify the type of contamination and capture photographic evidence. Completed bin contamination inspections reports are sent back to WasteTrack in real time and stored against the selected property.

➤ **Deploy a New Bin**



WasteTrack Mobile allows you to Deploy a New Bin or Bins at a selected site capturing the bin type, size, serial number and RFID, if available.

➤ **Bin Search**



WasteTrack Mobile's Bin Search can be used to identify bins in the field either by entering its serial number or scanning its RFID tag.